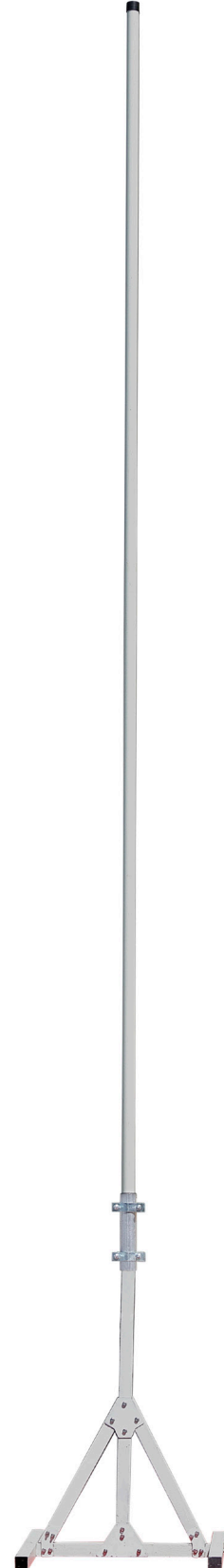


## 151-159 MHz REPEATER ANTENNA

This product is a 6.2 m long collinear monopole antenna operating at the VHF frequency band of 151-159 MHz with 5dBd (7.1 dBi) of gain. Using female N-type connector, it is developed for use on fixed sites like base stations, roof tops, ships and masts, as repeater antenna. Low VSWR and proper material and topology selection in the design of the antenna result in maximum power handling capability of 500 W for this product. Free mounting and as high as possible is most preferable for this antenna, otherwise the VSWR and the radiation pattern will be influenced. Just avoid mounting the antenna parallel with and in the neighborhood of other metal parts. For lightning protection the antenna consists of a grounded radiator and therefore it shows a DC-short across the input port. A glass fiber tube completely encloses the accurately designed radiating element, as well as the matching circuitry section to ensure long life in all climates.



## REPEATER ANTENNA

<b>Frequency</b>	151-159 MHz
<b>Impedance</b>	50 Ohm
<b>VSWR</b>	< 1.7:1
<b>Gain</b>	7 dBi
<b>Polarization</b>	Linear
<b>Radiation Pattern</b>	Omni Directional
<b>Maximum Power Handling</b>	500 W CW
<b>Connector Type</b>	N-Type (F)
<b>Weight</b>	13 kg
<b>Height</b>	6.2 Meter
<b>Operating Temperature</b>	-41...+71 °C
<b>Storage Temperature</b>	-55...+85 °C

### ► Technical Dimensions



### ► Typical VSWR vs Frequency

