

380-400 MHz FIXED-SITE ANTENNA

This product is a 1.4 m long collinear monopole antenna operating at the UHF frequency band of 380-400 MHz with 3dBd (5.1 dBi) of gain. Using female N-type connector, it is developed for use on fixed sites like base stations, roof tops, ships and masts. Low VSWR and proper material and topology selection in the design of the antenna result in more than 150 W power handling capability for this product. Free mounting and as high as possible is most preferable for this antenna, otherwise the VSWR and the radiation pattern will be influenced. Just avoid mounting the antenna parallel with and in the neighborhood of other metal parts. For lightning protection the antenna consists of a grounded radiator and therefore it shows a DC-short across the input port. A glass fiber tube completely encloses the accurately designed radiating element as well as the matching circuitry section to ensure long life in all climates.

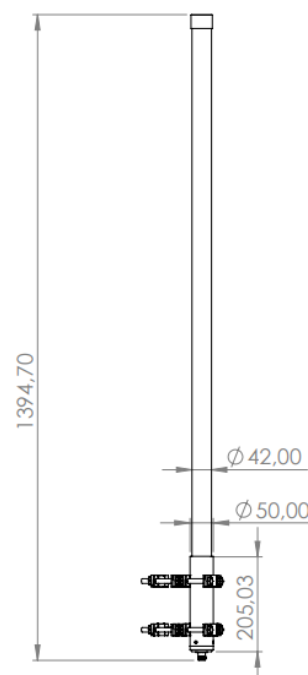




FIXED-SITE ANTENNA

Frequency	380 – 400 MHz
Impedance	50 Ohm
VSWR	<1.7 :1
Gain	5 dBi
Polarization	Linear
Radiation Pattern	Omni Directional
Maximum Power Handling	150 W CW
Connector Type	N-Type (F)
Weight	1.7 kg
Height	1.4 Meter
Operating Temperature	-41...+71°C
Storage Temperature	-55...+85°C

► Technical Dimensions



► Typical VSWR vs Frequency

